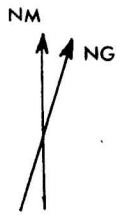




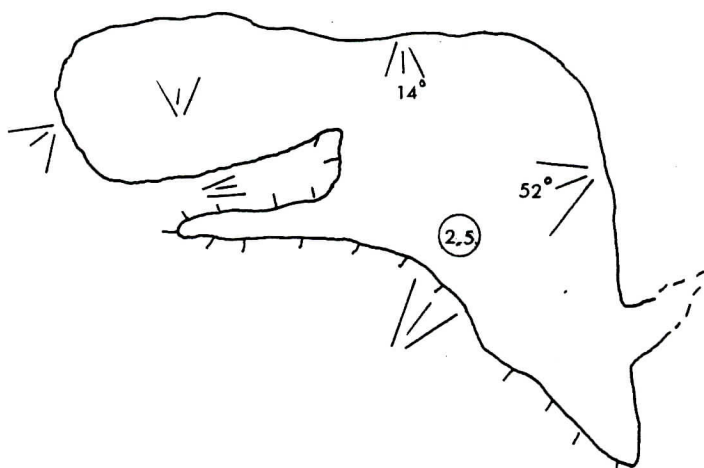
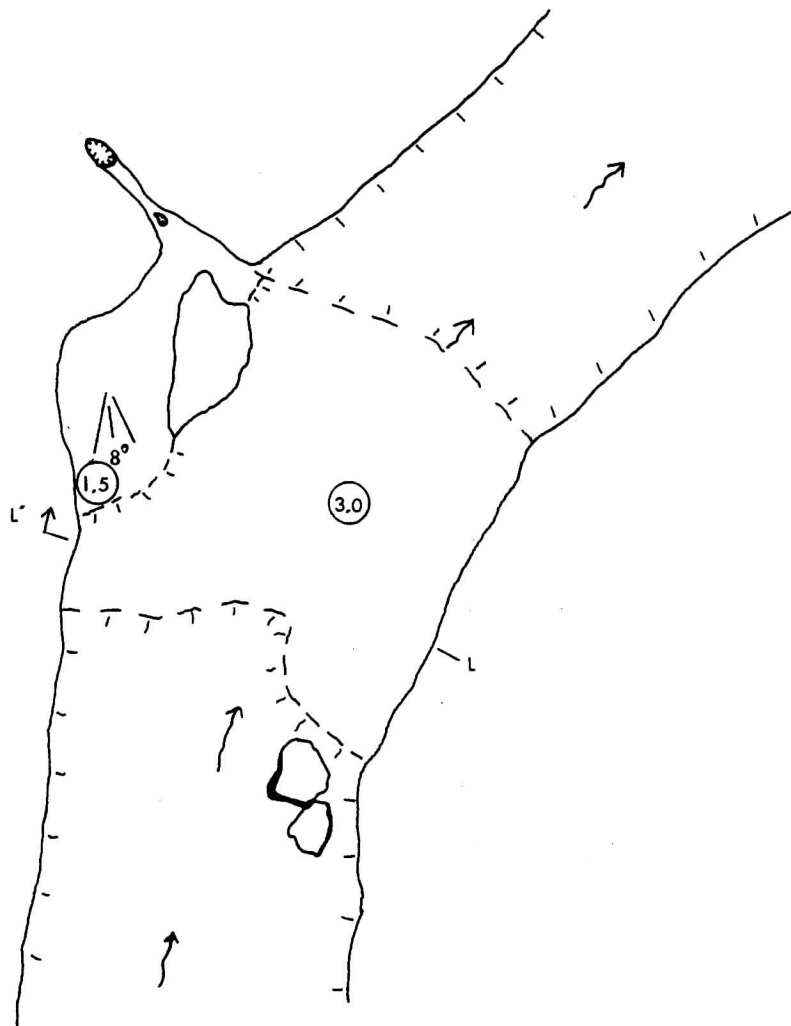
TOPOGRAPHIE : MAURICE ARBOUR
27 - 30 JUILLET 1969

GROTTE DE KAZABAZUA

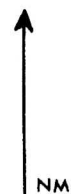
DESSIN : MAURICE ARBOUR
COMPLETE PAR PAULINE GRAVEL 1981



PONT NATUREL DE KAZABAZUA



ABRI SOUS-ROCHE DE KAZABAZUA



TOPOGRAPHIE: 22 AOUT 1981

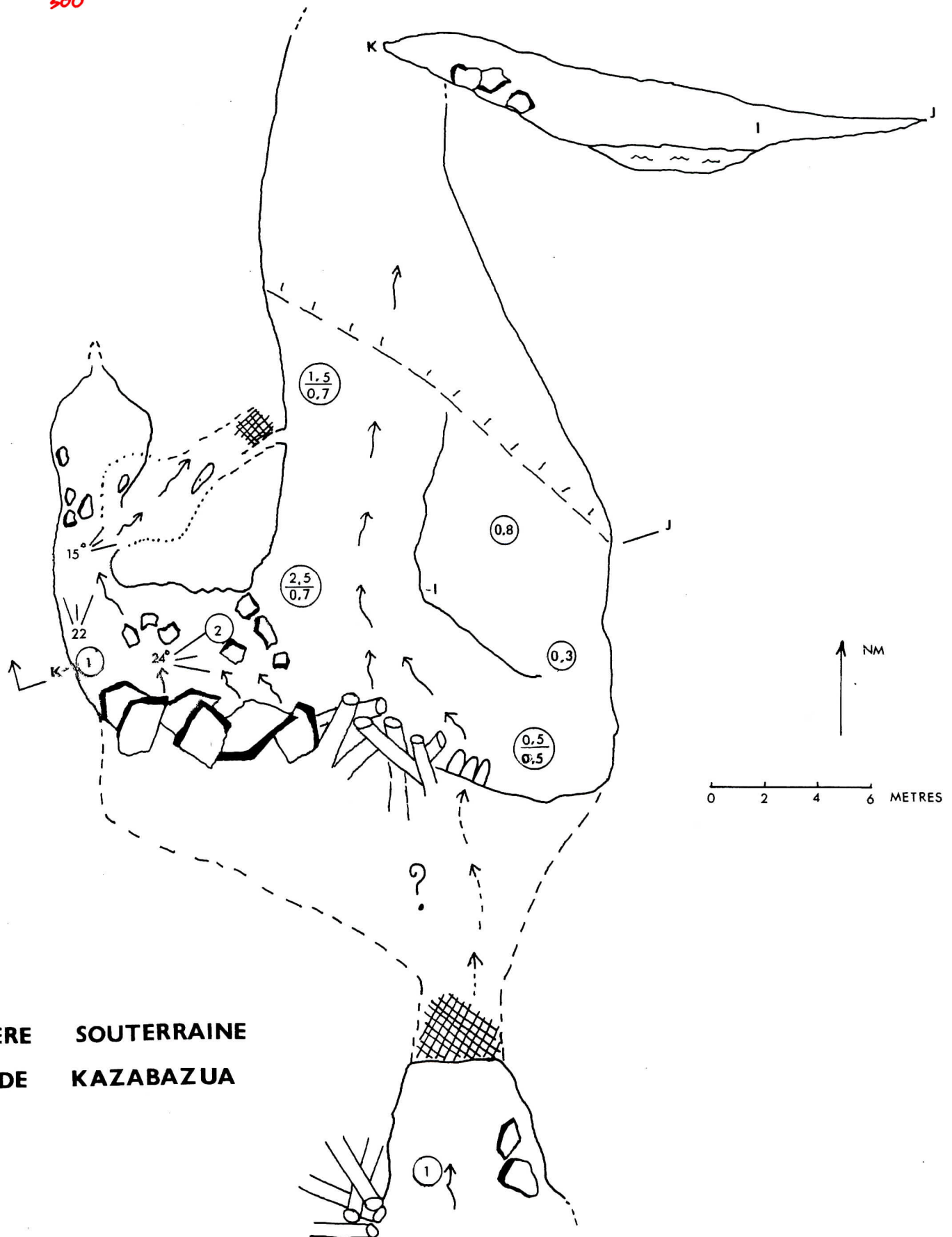
PAR JEAN LAMARRE

BERNARD GASC

PAULINE GRAVEL

DESSIN: PAULINE GRAVEL

0 2 4 6 METRES



**RIVIERE SOUTERRAINE
DE KAZABAZUA**

TOPOGRAPHIE: 22 AOUT 1981
PAR JEAN LAMARRE
 BERNARD GASC
 PAULINE GRAVEL

DESSIN : PAULINE GRAVEL